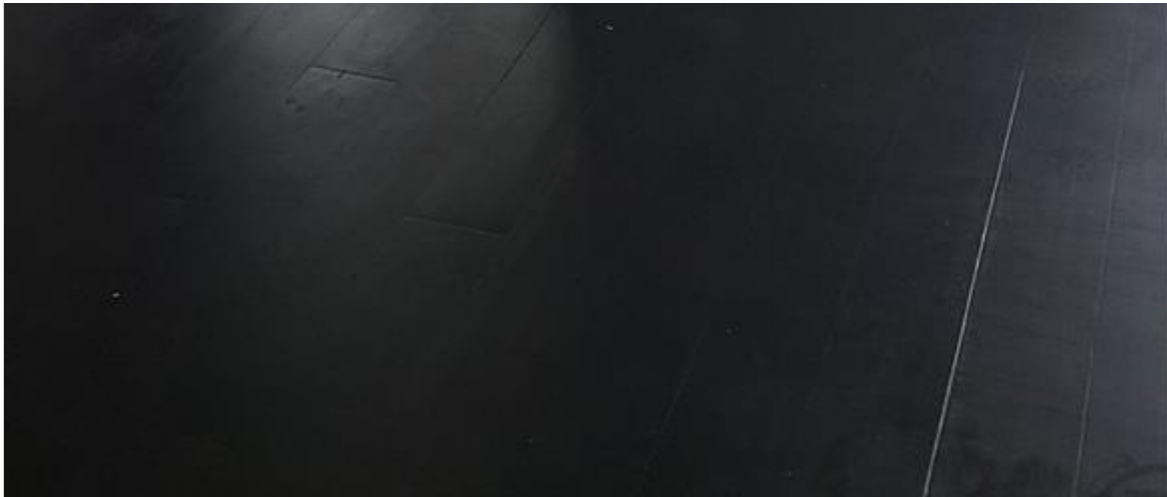




A11687336 © Miami MLS® 2024



Price: \$460,000

MLS Number: A11680726

Condo / Town Home

2000 N Bayshore Dr Unit 228, Miami, Florida 33137 USA

Beds: 2

Baths: 2

Living Area: 1,173

Unit: 228

HOA Fees: \$1,014

Year Built: 2004

Community: CITE CONDO

Subdivision: CITE CONDO

ABOUT THIS PROPERTY

GREAT 2 BEDROOM/2 BATHROOM,SPLIT FLOOR PLAN, CORNER UNIT,KITCHEN WITH ALL APPLIANCES ,WASHER AND DRYER INSIDE THE UNIT,ALL PAINTED ,EXCELLENT LOCATION CLOSE TO DOWNTOWN,WYNWOOD,DESIGN DISTRICT,MIDTOWN,MIAMI BEACH,COCONOUT GROVE AND I-95.CITE IS LOCATED IN FRONT OF POPULAR MARGARET PACE PARK, TENNIS,BASKET, CHILDREN PLAYGROUND,DOG PARK. BUILDING OFFERS 24/7 FRONT DESK,VALET,SECURITY,AND GATED GARAGE

PROPERTY LOCATION

Image



©2025 | BRECO REALTY GROUP, LLC,
YOUR REAL ESTATE ADVISOR IN MIAMI
USA: + 1.954.884.5050

BRECO@BRECREALTY.COM | [PRIVACY POLICY](#) |
[ACCESSIBILITY](#)

